

Welcome to Speargrass Community Association

Spring General meeting - Wednesday, May 8, 2024

AGM in Fall - TBA



AGENDA

- ▶ Review and Approve Minutes
- ▶ Review and Approve Agenda
- ▶ Introductions
- ▶ Welcome New Members & Special Guests
 - ▶ Carseland AG Society
 - ▶ Wheatland County
 - ▶ Speargrass Golf Course
 - ▶ Trails by the Bow
- ▶ Annual Reports
 - ▶ Communications Report
 - ▶ Grant updates
 - ▶ Treasurer Report
 - ▶ Beautification Report
 - ▶ Welcome Committee
 - ▶ RV Report
 - ▶ Executive Terms



Welcome & Special Guests

- ▶ Notes from the President
- ▶ Carseland AG Society
- ▶ Speargrass Golf Course
- ▶ Wheatland County Councillor
- ▶ Trails by the Bow



SPEARGRASS
Golf Course

Warren Boese

**General Manager
Speargrass Golf Course
Manz Inc.**

GOLF COURSE NEWS

Overwintering
Conditions

Tree Removal

Clubhouse
move

New
Executive
Chef

18th Hole
Relocation

New
Clubhouse
Update



HOLE #13



HOLE #16 NO TREES!



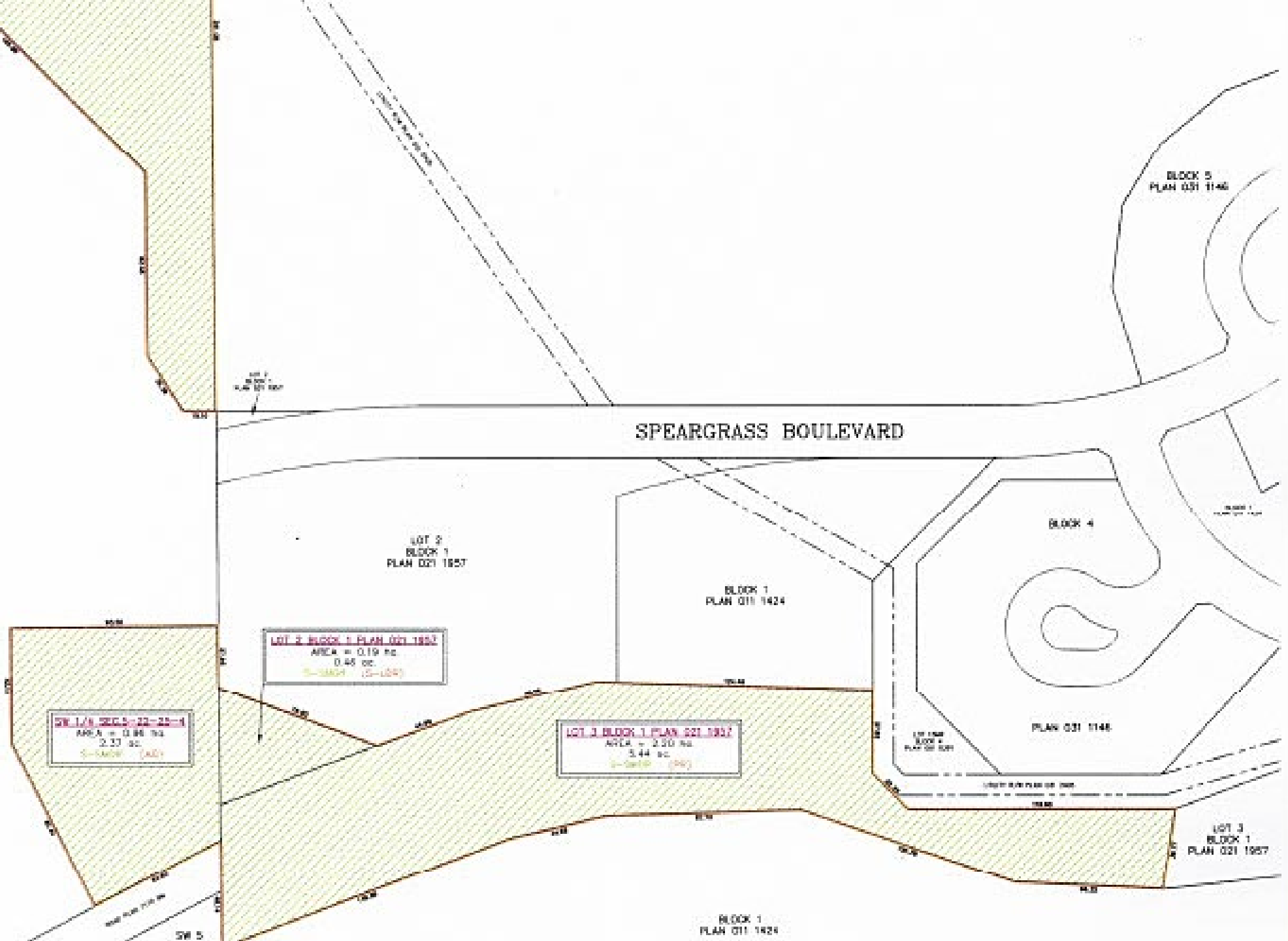
CLUBHOUSE RELOCATION

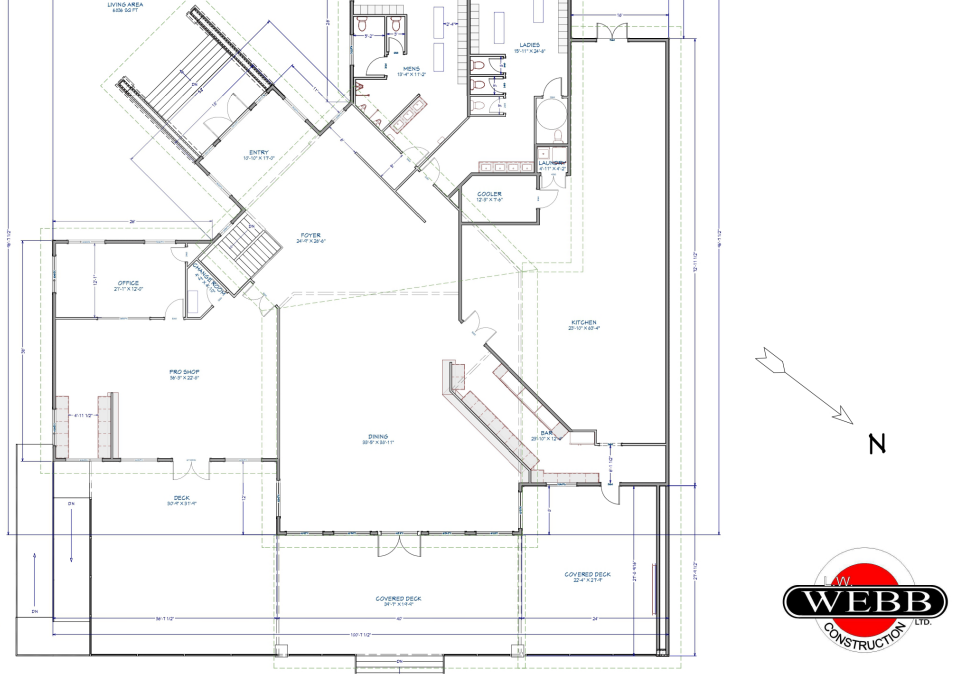


NEW EXECUTIVE CHEF CARLOS SALGUERO

FULL MENU COMING MAY 22nd!

SW 1/4 SEC. 5 - 22 - 25 - 4





MAIN LEVEL



PERSPECTIVE



PERSPECTIVE



PERSPECTIVE





JOIN US FOR

Mother's Day

BRUNCH

SUNDAY, MAY 12TH

11AM - 2PM

ADULTS \$39.95
CHILDREN 6- 12 \$19.95
KIDS 5 & UNDER FREE



82 SPEARGRASS BLVD,
CARSELANDAN TOJ OMO

Reservations
please email:
amanda@speargrass.ca



Updates from Wheatland County



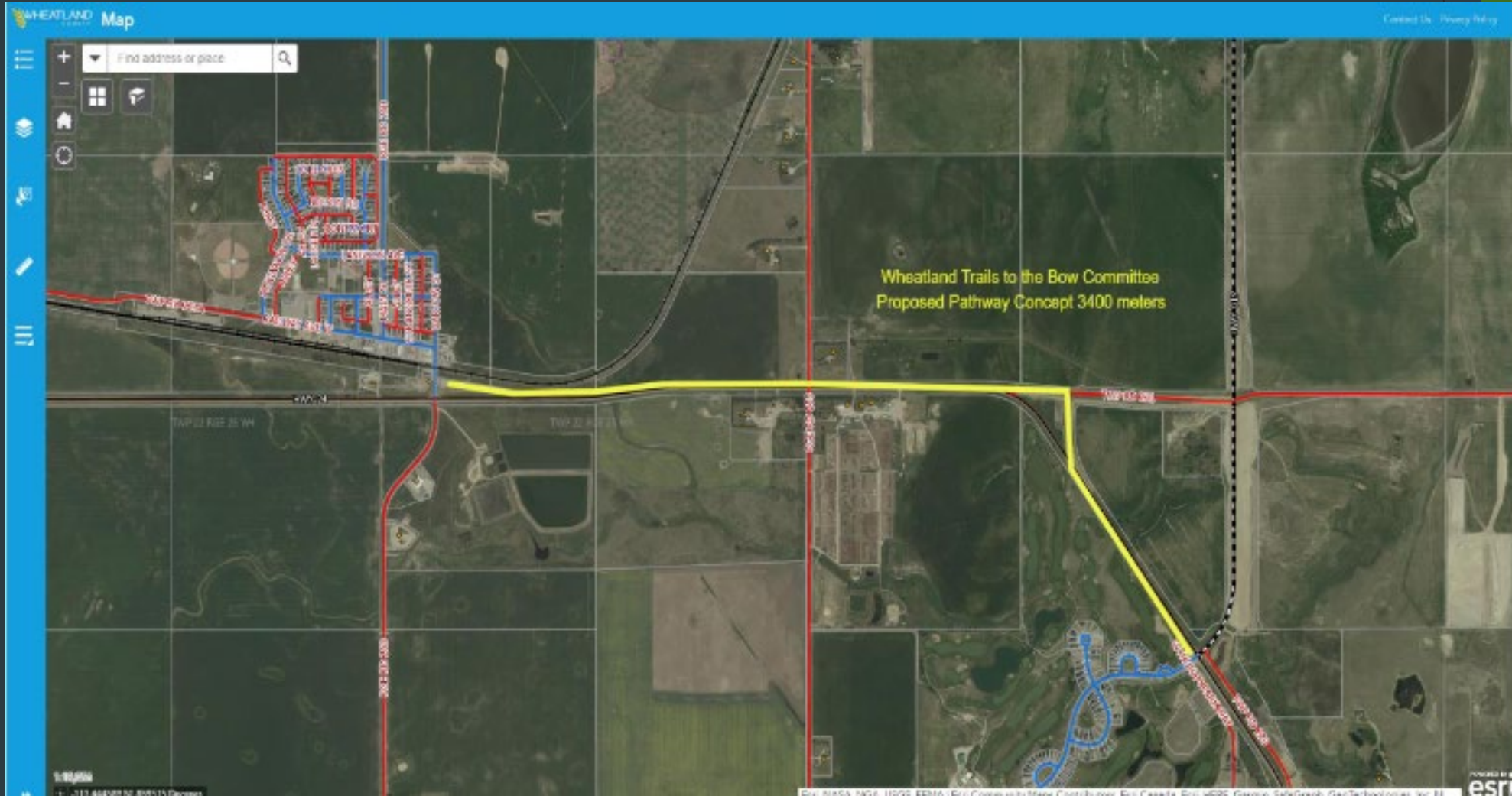
Wheatland Trails to the Bow

AGM

May 8, 2024

Carseland Hall

Original Route Between Speargrass & Carseland

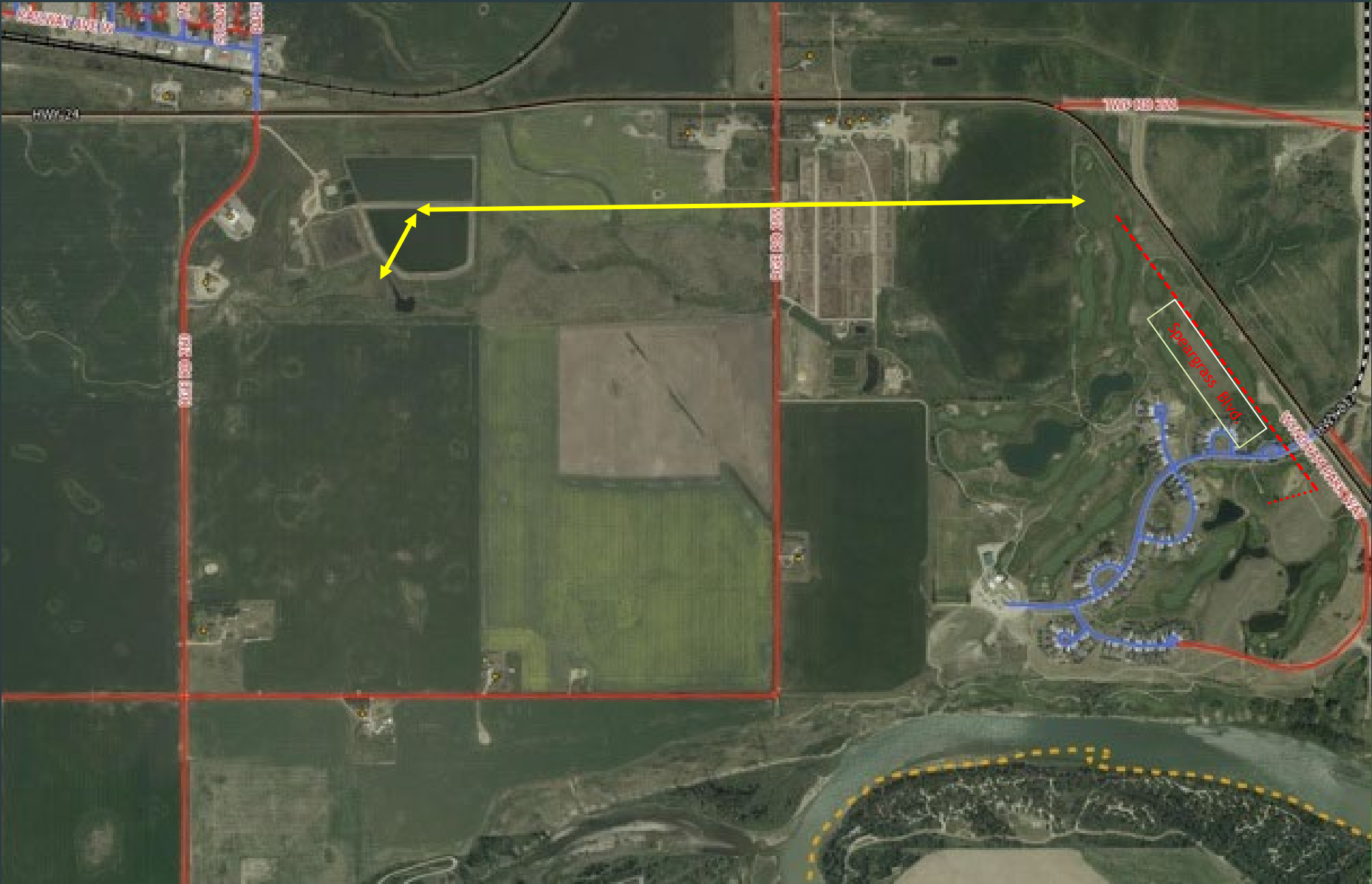


Joining Two Hamlets

- ▶ In 2022 this was the original route and to join our two communities (Speargrass and Carseland)
- ▶ Between 2022 and 2023 we looked at several other possible routes however we were unable to get easements from the landowners and we cannot afford to buy the land; therefore the only route open to us is to travel south along Highway 24
- ▶ Initially the cost was estimated at \$775,000.00
- ▶ This price did not include engineering costs and was prior to Speargrass Blvd. being extended



New 2024 Route Alignment



New 2024 Route Alignment

- ▶ Prices has increased substantially since the inception of this project
- ▶ In order to apply for our grant we need an engineering company to do a preliminary design of the pathway which will give a more accurate cost
- ▶ Therefore we met with Wheatland County and they allowed us to access our “aggregate account” to engage an engineering firm
- ▶ As of March 2024 our new route will begin at the Carseland Firehall and run along the south side of Highway 24 and will end at the beginning of Speargrass Blvd.



Joining Our Two Communities

- ▶ Future pathway users will be able to park their vehicles at the Carseland Firehall
- ▶ It is approximately 2.7 km from the Carseland Fire to Speargrass Blvd.
- ▶ A pathway is beneficial for our health to increase the physical activity of our rural residents (similar to the Friendship Trail in Diamond Valley) as well as our environment.
- ▶ As new industries move into our area our communities will grow. We need to be proactive and provide future residents modern amenities



Questions & Would You Like to Help

- Questions
- If you would like to help please contact:
Shelley McEachern
Email: shelley.mceach168@gmail.com
Phone: 403-934-5665

Thank you





Thanks to the Volunteers

- ▶ Vic Donald
- ▶ Bruce Paul
- ▶ Jeff Johnston
- ▶ Jocelyn Potter
- ▶ Ron Walker

- ▶ Flower planting
- ▶ Graffiti removal
- ▶ Easter Egg Hunt

Annual Reports





Communications Update

- ▶ Grant updates
 - ▶ Operating Grant
 - ▶ Roadway circle - Wyndham Park Way
 - ▶ Replacement of Christmas Lights
 - ▶ RV Security
 - ▶ Large Green Space Tree Planting
- ▶ Notice for Communication (we are all volunteers)
- ▶ Upcoming events

Upcoming Events

- ▶ Spring Clean Up - Saturday, May 11, 2024
- ▶ Speargrass Golf Tournament - Saturday, June 23, 2024
- ▶ Stampede Breakfast - Saturday, July 13, 2024 ★
- ▶ Movie Night - Saturday, August 24, 2024 ★
- ▶ Fall BBQ/Garage Sale - Saturday, September 14, 2024

**Speargrass Community Association
Income Statement
January 1, 2023 - December 31, 2023**

	Year 2023
Revenue	
Membership Fees	4,200.00
RV Rental Monies	12,080.00
Grant Monies (CERB)	13,090.60
Deferred Grant Revenue	11,105.60
Total Revenue	<u>40,476.20</u>
Expenses	
Amortization (see schedule)	15,157.00
Community Events	187.89
Insurance	770.03
Interest & Bank Charges	- 24.73
Property Taxes	2,685.41
Utilities	1,300.62
Supplies/General Admin	1,540.46
Trees & Beautification	11,285.45
RV Storage Expenses	108.93
Total Expenses	<u>33,011.06</u>
Net Revenue/(Loss)	<u>7,465.14</u>

*Grant Funds are recognized over 10 years for Playground Equipment
See attached Schedule



Used CERB
Grant

**Speargrass Community Association
Income Statement
January 1, 2022 - December 31, 2022**

	Year 2022
Revenue	
Grant Funds *	4,445
RV Rental Revenue	11,375
Membership Fees	4,700
Deferred Grant Revenue	11,991
Total Revenue	<u>32,511</u>
Expenses	
Bank Charges and Other Expenses	61
Community Functions	581
Depreciation - Playground	11,991
Depreciation - Equipment	3,166
Insurance	1,503
RV Storage Expenses	949
Trees and Beautification	3,855
Property Taxes	2,806
Supplies	4,324
Utilities	1,418
Total Expenses	<u>30,655</u>
Excess of Revenue over Expense	<u>1,855</u>

*Grant Funds are recognized over 10 years for Playground Equipment
See attached Schedule

Treasurer Report



Beautification Report

Updates

- ▶ Christmas Lights - organized, zoom boom
- ▶ Flags
- ▶ Flowers

Welcoming Committee



3 New Residents



123 homes approximately

RV & Member Report

Rented Spots - 49
Vacant - 6 spots
1 Member still owes

Total spots = 55

RV Security

Abnet - donating for free
- sign on fence
Ground work to be completed by middle to end of May (weather permitting)

- Camera and internet will be live soon

Members

87





Executive

- ▶ Vacancies in the Fall:
 - ▶ Vice President
 - ▶ Beautification
- ▶ Would love to have an events coordinator too!